

The CM2 Sidescan Sonar System

Versatile, Rugged, and Dependable - The **complete** sidescan survey system

SOFT TOW CABLES

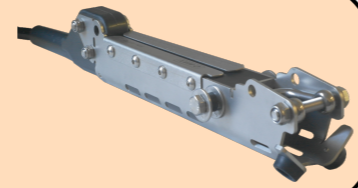
Coaxial hand-hauled cable for shallow water surveys.



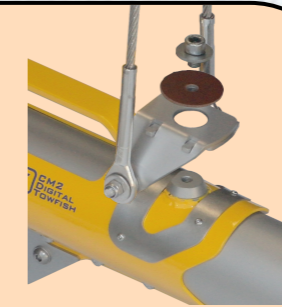
A storage reel, with or without internal slip rings, keeps things tidy.

The CM2 product family comprises the CM2 digital towfish, STR topside transceiver unit, MaxView acquisition software and a choice of kevlar or stainless steel armoured tow cables. A wide range of accessories is available.

The ergonomic tow cable terminator aids launch and recovery.



The towfish includes a tumble-free mechanism to help prevent loss. If the towfish becomes obstructed it uses a frangible disk that breaks when the cable tension exceeds a preset limit. This action transfers the cable tension to the rear of the fish, helping it to tumble clear of the obstruction.



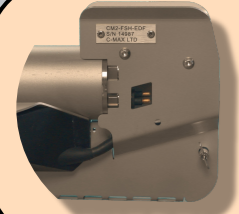
SONAR TRANSCIVER



The compact, rugged, splashproof topside unit offers a plug-and-play USB connection to MaxView or third party acquisition software. AC/DC power supply.



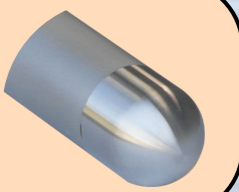
The C-Shell provides the STR with a waterproof case, complete with MIL-SPEC connectors and optional internal GPS receiver.



The tow cable connection is protected between the rear fins.

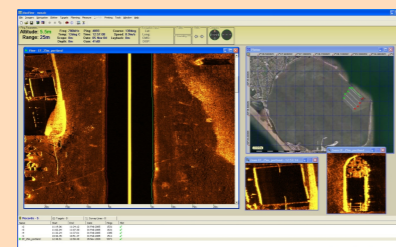


Corrosion resistant 316 stainless steel construction provides durability and a 2000m depth rating.



MAXVIEW ACQUISITION SOFTWARE

MaxView is designed to work with the CM2 and offers a wide range of online and offline features including acquisition and playback, survey planning, navigation and target marking.



A versatile plotter shows swept coverage, survey planning, targets and chart imagery.

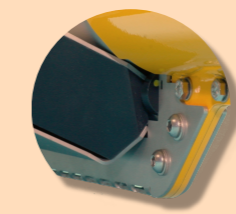
An integrated echo sounder ensures accurate, automatic bottom tracking.

CM2 Digital CHIRP Towfish

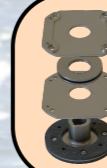
DF { 100kHz - 500m/side } EDF
Option { 325kHz - 200m/side } Option
780kHz - 50m/side } Option

18kg (40lbs) in air, 11kg (25lbs) in water

No tools are needed to change the angle of the transducers.



COMPACT POWER WINCH WITH 300M CABLE



The internal automatic overload clutch ensures that the cable and winch are not overstressed.



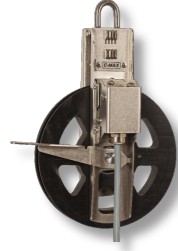
The winch includes motor temperature protection and an emergency stop switch. Electronic "soft start" current-limiting minimizes the surge current when accelerating.



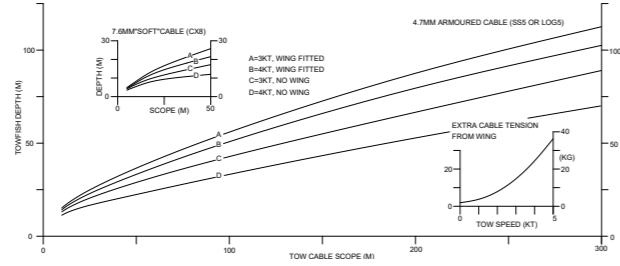
The winch remote pendant allows the sonar operator direct control of the tow cable scope - no need to pass movement commands to a deckhand.

C-MAX

Accessories



16cm and 32cm pulleys are specially designed to allow easy loading of the tow cable. With the optional sensor as shown each unit becomes a counting pulley, displaying the outboard cable length on the sonar screen.



The optional wing depressor pulls the towfish up to 50% deeper. Unlike other depressors the high aspect-ratio wing, with built-in handles, makes for easy launch and recovery. It weighs only 5kg but provides 35kg of downforce at 5 knots.

The USBL transponder bracket suits a wide variety of beacons, holding the transponder at the optimum angle.



The polemount bracket allows the towfish to be fixed alongside the survey boat where this is preferable to towing the fish. The bracket suits standard 2" or 50mm poles.



Transit cases with internal fittings protect the towfish, winch and wing.

Sales Contacts



UK
 C-MAX Ltd.
 9, Hybris Business Park
 Crossways
 Dorchester
 Dorset DT2 8BF
 England

Contact: Peter Robinson

Tel: +44 1305 853005

E-Mail: sales@cmasonar.com
 Web: <http://www.cmasonar.com>



Worldwide

Australia, New Zealand

Sonartech ATLAS Pty. Ltd.
 93 Buchan Street
 Portsmith QLD 4870
 Australia

Contact: Shaun Geddes

Tel: +61 7 4035 2522
 Email: shaun.geddes@sonartech.com.au
 Web: <http://www.sonartech.com.au>

China

Wuxi Haiying Cal-Tec Electronic
 Equipment Co. Ltd.
 18 Liangxi Rd
 Wuxi, Jiangsu 214061
 China

Contact: Zhang Fanrong

Tel: +86 510 886 69692
 Email: haica@vip.sina.com
 Web: www.haiyingmarine.com

France

MARITECH SARL
 Chemin St Joseph
 83310 Grimaud
 France

Contact: Bruce Swale

Tel: +33 4 94 43 31 61
 Email: maritech@free.fr

Germany

Meerestechnisches Büro Turla GmbH
 MacArtney Gruppe
 Wischhofstr. 1-3, Geb. 11
 24148 Kiel
 Germany

Contact: Jorg Brunken

Tel: +49 431 535500 70
 Email: info@m-b-t.com
 Web: <http://www.m-b-t.com>

India

Results Marine
 Khivraj Complex II, Second Floor
 480, Anna Salai
 Nandanam
 Chennai 600 035
 India

Contact: S Hariharan

Tel: +91 44 2431 0165
 Email: hari@resultsmarine.com

Netherlands, Belgium

Nautikaris B.V.
 Margadanstraat 36
 1976 DN IJmuiden
 The Netherlands

Contact: Cor Beemster

Tel: +31 25 5820000
 Email: info@nautikaris.com
 Web: www.nautikaris.com

Poland

ESCORT Sp.zo.o.
 ul. Grudziadzka 3
 70-103 Szczecin
 Poland

Contact: Arek Markowski

Tel: +48 91 431 04 00
 Email: sales@escort.com.pl
 Web: www.escort.com.pl

Italy

Geomarine srl
 Via Della Darsena 9
 60019 Senigallia (AN)
 Italy

Contact: Vincenzo Mauro

Tel: +39 071 0974349
 Email: info@geomarine.it
 Web: www.geomarine.it

Russia & CIS

Geomatics Centre Ltd.
 Moscow University Science Park
 5 Vorobiev Gory, Suite 512
 Moscow 119899
 Russia

Contact: Dimitri Stolyarenko

Tel: +7 095 1375417
 Email: stol@geomatics.ru
 Web: www.geomatics.ru

South East Asia

Hydronav Services Pte. Ltd.
 33 Ubi Avenue 3
 #01-63 Vertex
 Singapore 408868

Contact: Wui Ong Chuan

Tel: +65 6844 6866
 Email: sales@hydronav.com
 Web: www.hydronav.com

Sweden

CA Clase AB
 Ruskvädersgatan 8
 418 34 Göteborg
 Sweden

Contact: Mikael Ringdal

Tel: +46 31 647 212
 Email: mikael.ringdal@caclase.se
 Web: <http://www.caclase.se>

USA

Seafloor Systems Inc.
 3113-F Alhambra Drive
 Cameron Park
 California 95682
 USA

Contact: John Tamplin

Tel: +1 530 677 1019
 Email: john@seafloorsystems.com
 Web: www.seafloorsystems.com

Spain

Hydroacoustics S.L.
 Doctor Fleming 26
 28036 Madrid
 Spain

Contact: Antonio Girona

Tel: +34 91 457 3901
 Email: mail@hydroacoustics.com
 Web: www.hydroacoustics.com

Turkey

Aspiro Sualti Teknoloji Ltd.Sti
 Kusdili Cad, Pazaryolu Sk. No:2/432
 Ekizoglu Is Hani Kat: 4 34714
 Kadikoy-Istanbul
 Turkey

Contact: Safak Akman

Tel: +90 216 414 93 50
 Email: safakakman@aspiro.com.tr

Japan

TOYO Corporation
 1-6, Yaesu 1-chome
 Chuo-ku
 Tokyo 103-8284
 Japan

Contact: Yusuke Sato

Tel: +81 3 3279 0771
 Email: hantani@toyo.co.jp
 Web: www.toyo.co.jp

Greece

MARESCO Ltd.
 85, Vouliagmenis Ave.
 City Plaza Centre, Office 211
 166 74 Glyfada
 Greece

Contact: Evangelos Koronakis

Tel: +30 210 9642110
 Email: v.koronakis@maresco.gr
 Web: www.maresco.gr

For other regions please refer to our website www.cmasonar.com

SIDESCAN SONAR

